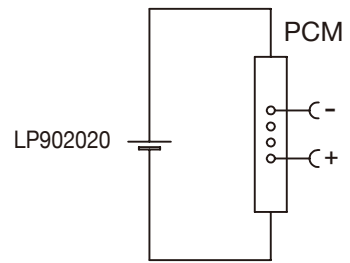


Circuit Diagram



Specification

Lithium Polymer Battery Pack LP902020 270mAh 3.7V with Protection Circuit Module (PCM)
 This data sheet describes the requirements and properties of lithium polymer rechargeable battery pack manufactured by LiPol Battery Co., Ltd - China

Mechanical Characteristics

- Cell ▶ LP902020
- PCM ▶ Yes
- NTC ▶ No
- Configuration ▶ 1S1P
- Weight ▶ appr. 5.4g

Electrical Specification

- Rated Capacity ▶ 270mAh min, 270mAh typ.
- Nominal Voltage ▶ 3.7V
- Wat-Hour Rating ▶ 0.999Wh
- Max. Operating Voltage Range ▶ 2.75V to 4.20V
- Max. Charge Voltage ▶ 4.20V ±50mV
- Max. Charge Current ▶ 135mA
- Standard Charge Current ▶ 54mA
- Max. Discharge Current ▶ 270mA
- Standard Discharge Current ▶ 135mA
- Discharge Cut Off ▶ 2.75V
- Internal Impedance ▶ <200mΩ
- Expected Cycle Life @ (0.5C/0.5C) @ 23±5°C ▶ 500 cycles ≥ 80%

Cell Protection

- Overcharge Detection ▶ 4.275 ±50mV (0.7 to 1.3sec. delay, release 4.075V ±50mV)
- Overdischarge Detection ▶ 2.75V ±50mV (14 to 26msec. delay, resume 3.05V ±50mV)
- Overcurrent Detection ▶ 2A to 2.5A (8 to 16msec. delay)

Ambient Conditions

- Charge Temp. Range ▶ +10°C to +45°C
- Discharge Temp. Range ▶ -20°C to +60°C
- Storage Temp. Range ▶ 1 year at -20°C to +30°C >70%
- ▶ 3 months at -20°C to +45°C >70%
- ▶ 1 month at -20°C to +60°C >70%

Environmental and Safety

Please follow LiPol Handling and Safety Precautions for Lithium Polymer Battery. This battery meets the requirements of Battery Directives, and the battery parts are IEC62133-2-2017 & RoHS-Compliant. For more safety precautions and performance standards, please go to www.lipolbattery.com/support.html

Mae in mm All dimensions in mm	Freimatoleranzen Generaltoleranzen	Erst. / Orig	Date	Name	LiPol Battery
Als Betriebsgeheimnis anvertraut, alle Rechte vorbehalten	up to 6 · 0,1 over 6 up to 30 · 0,2	Gepr./check	11.01.2022	Xie Qingfang Guo Daxia	
Proprietary data, company confidential, all rights reserved.	over 30 · 0,3 over 100 · 0,5	Benennung/ Designation	LP902020	Zchg. / Dwg. Nr.	Index
		1	FD_4395_10	support@lipolbattery.com	www.LiPolBattery.com